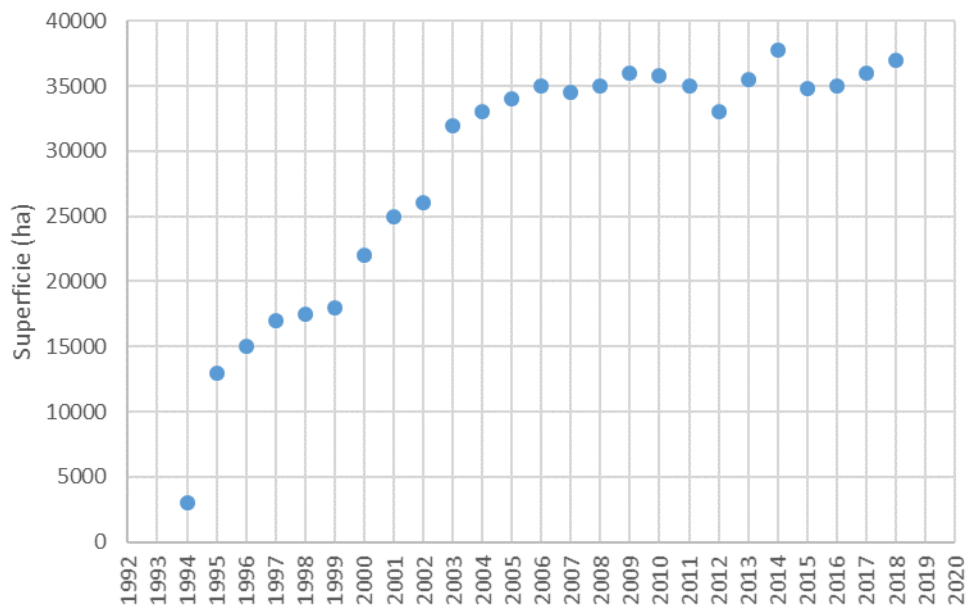




## Servicio de **A**sesoramiento de **R**iegos

Dra. Amelia Montoro

**30**  
ANIVERSARIO  
1988 • 2018



**S**ervicio de **A**sesoramiento de **R**iegos

## SAR EN EL MUNDO

1982

California Irrigation Management Information System (CIMIS)

(<http://www.cimis.water.ca.gov>)

Extension University of Minnesota

(<http://www.extension.umn.edu/topics.html>)

Cooperative Extension (University of Georgia)

(<http://www.ces.uga.edu>)

Cooperative Extension (University of Florida)

(<http://edis.ifas.ufl.edu/index.html>)

Cropwat Irrigation Schedule

(<http://www.fao.org/ag/AGL/aglw/cropwat.htm>)

Utah State University  
Extension

(<http://www.engineering.usu.edu/Departments/bie/software.html>)

Center for Irrigation Technology (CIT)

(<http://www.cati.csufresno.edu/cit>)

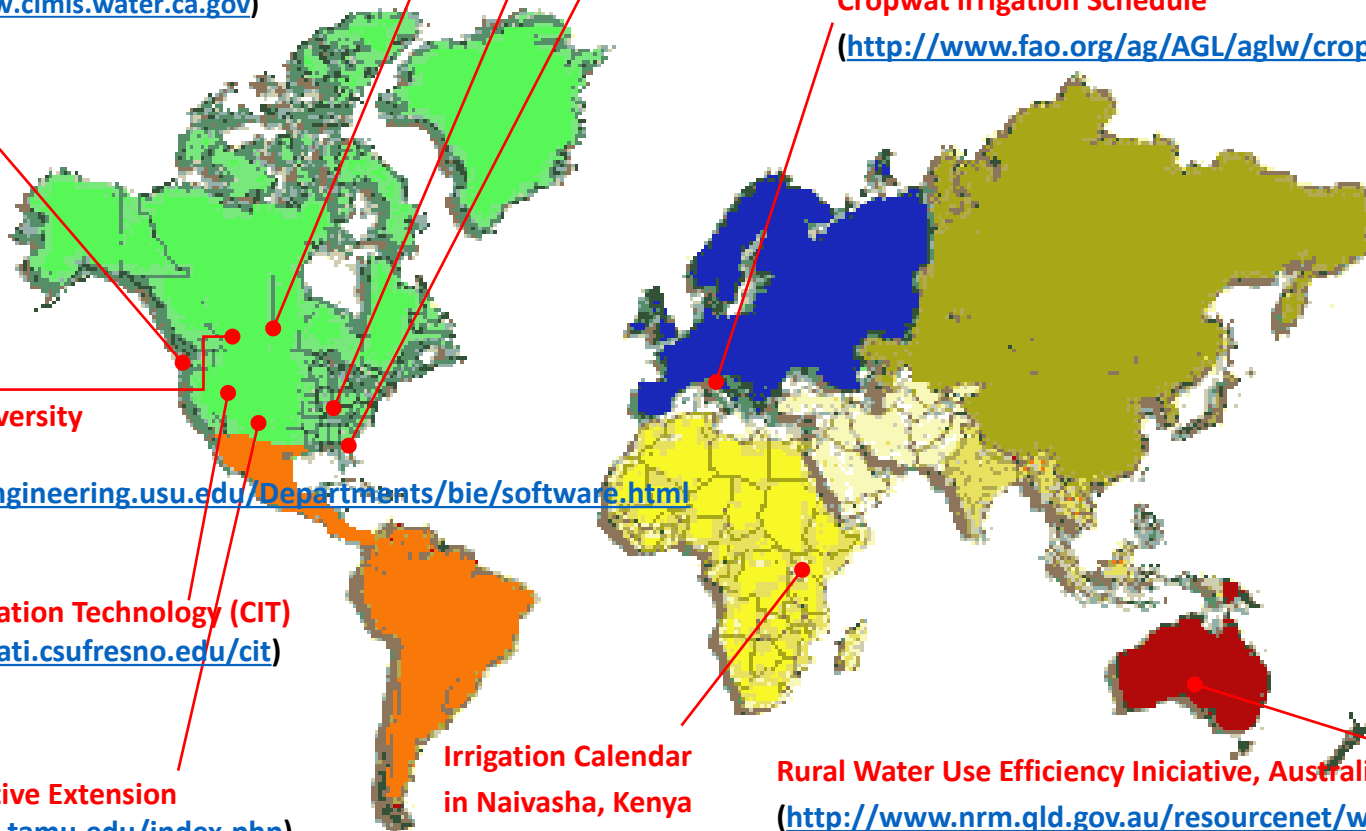
Texas Cooperative Extension

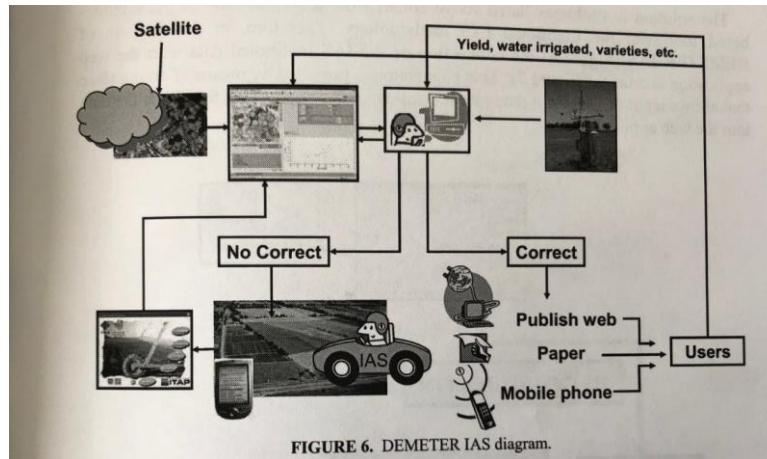
(<http://texaset.tamu.edu/index.php>)

Irrigation Calendar  
in Naivasha, Kenya

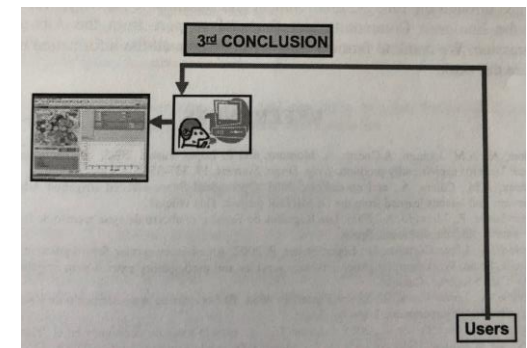
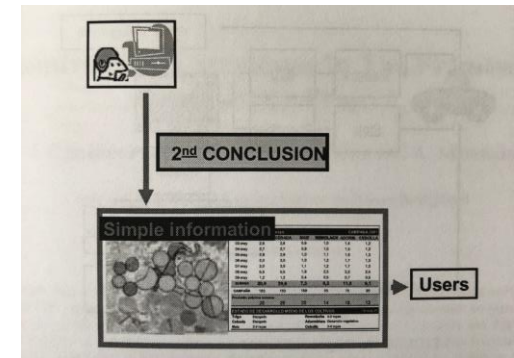
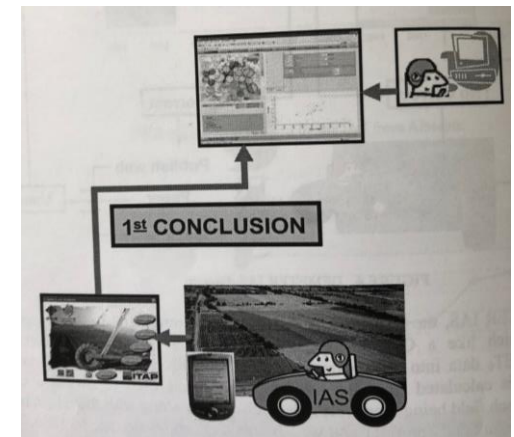
Rural Water Use Efficiency Initiative, Australia (RWUE)

(<http://www.nrm.qld.gov.au/resourcenet/water/rwue/index.html>)





Montoro, A. and López Fuster, P. 2006. Evaluation of Demeter by the Irrigation Advisory Service from Albacete (Spain). Earth Observation for Vegetation Monitoring and Water Management. American Institute of Physics (AIP), vol 852: 59-66.



**Servicio de Asesoramiento de Riegos**

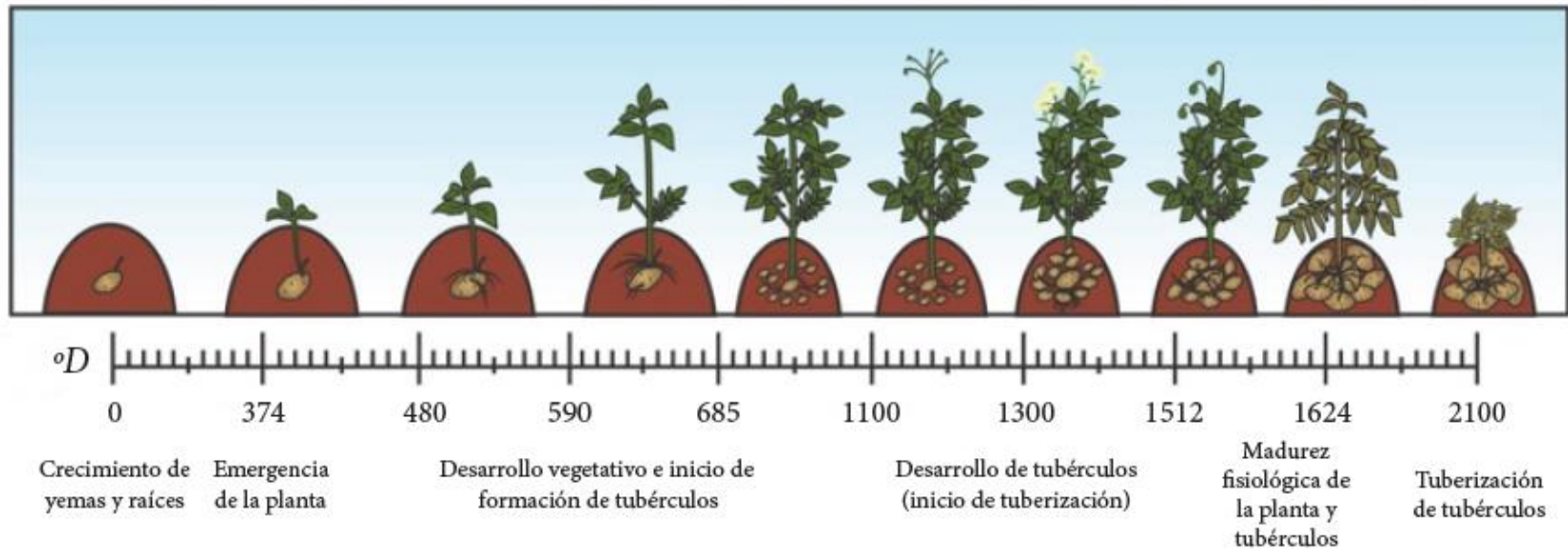


DIPUTACION DE ALBACETE

**ITAP**

INSTITUTO TECNOLÓGICO AGROPECUARIO

Mapa de las ZONAS DE ASESORAMIENTO

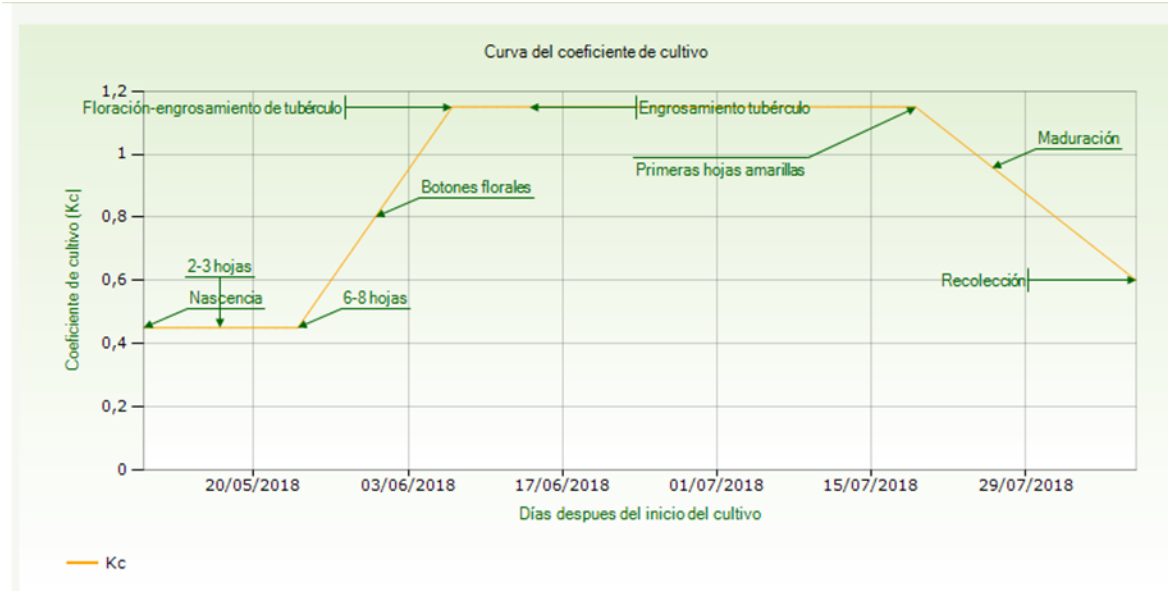


**Servicio de Asesoramiento de Riegos**



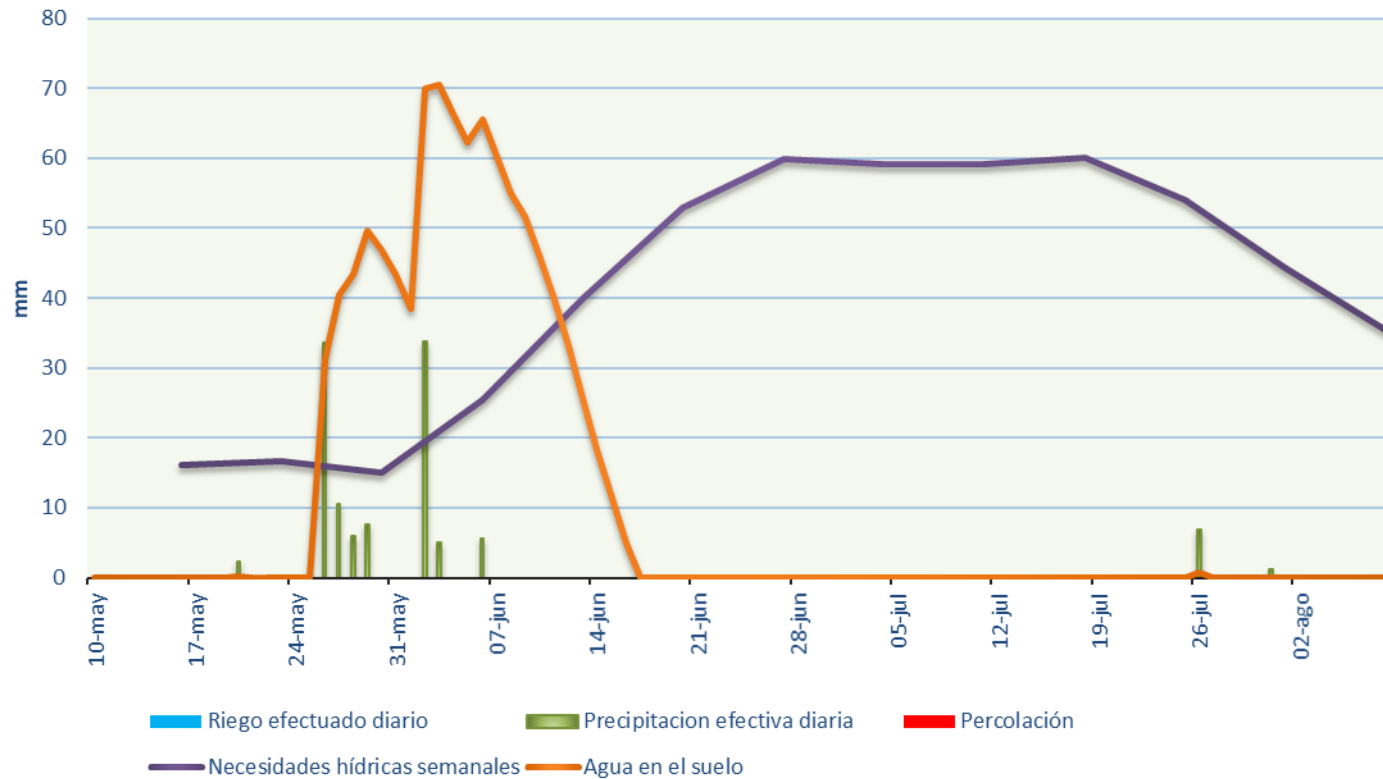


**S**ervicio de **A**sesoramiento de **R**iegos



Fecha	Estado fenológico
	Seleccione estado fenológico ▼
10/05/2018	Nascencia ▼
17/05/2018	2-3 hojas ▼
24/05/2018	6-8 hojas ▼
31/05/2018	Botones florales ▼
07/06/2018	Floración-engrosamiento de tubérculo ▼
14/06/2018	Engrosamiento tubérculo ▼
19/07/2018	Primeras hojas amarillas ▼
26/07/2018	Maduración ▼
08/08/2018	Recolección ▼

# Servicio de Asesoramiento de Riegos



**S**ervicio de **A**sesoramiento de **R**iegos

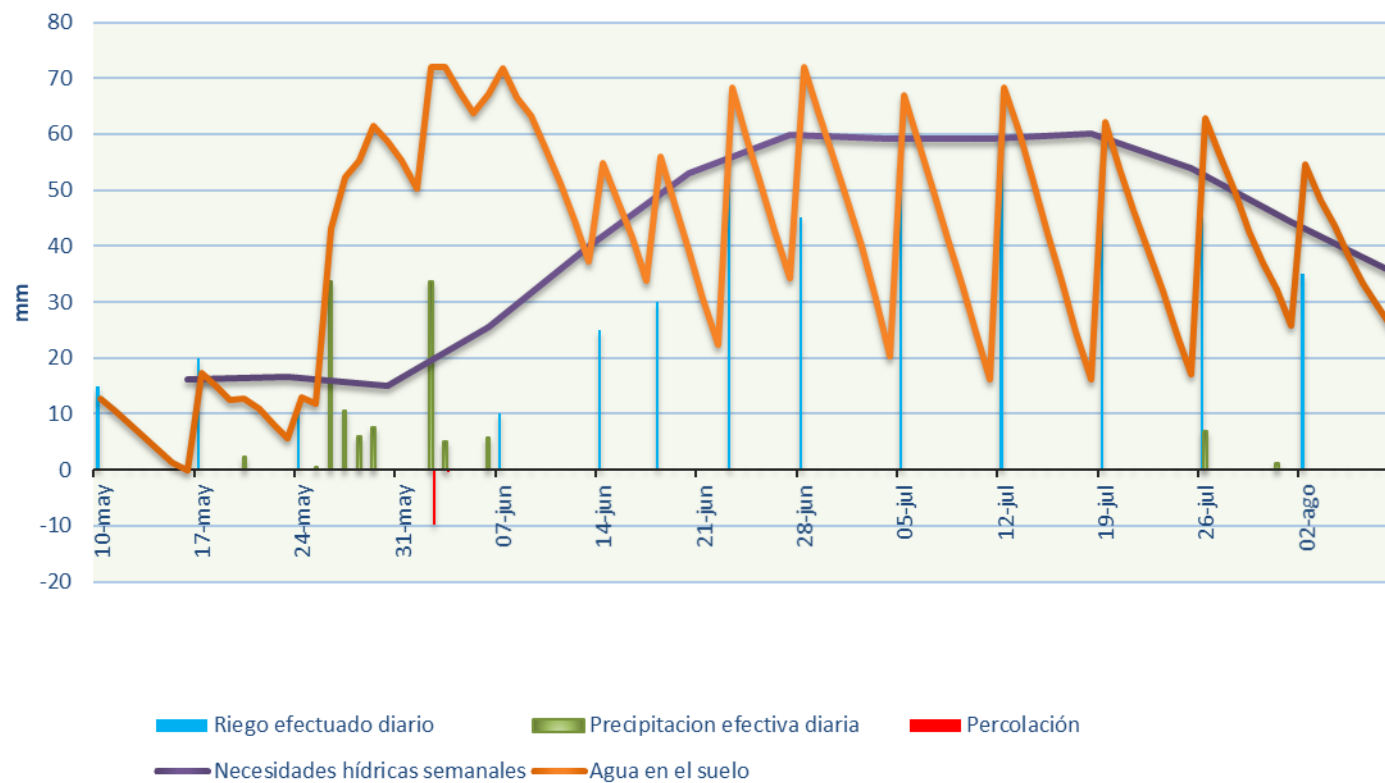


Necesidades hídricas: 538 mm

Riego: 460 mm

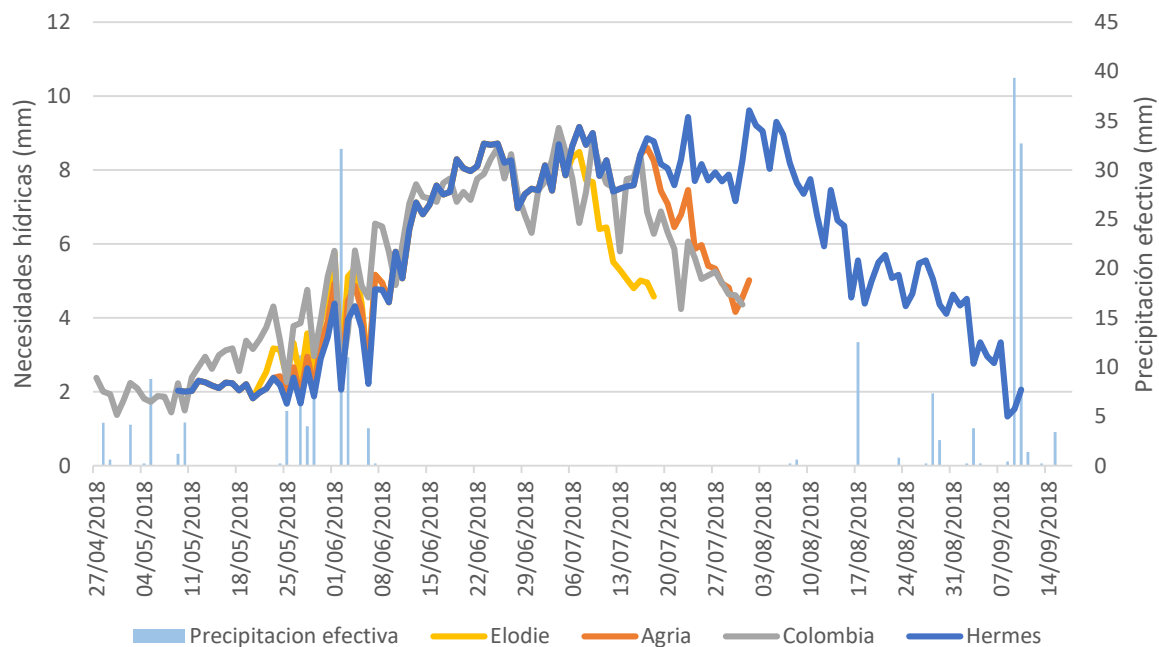
Precipitación efectiva: 113 mm

Percolación: 10 mm



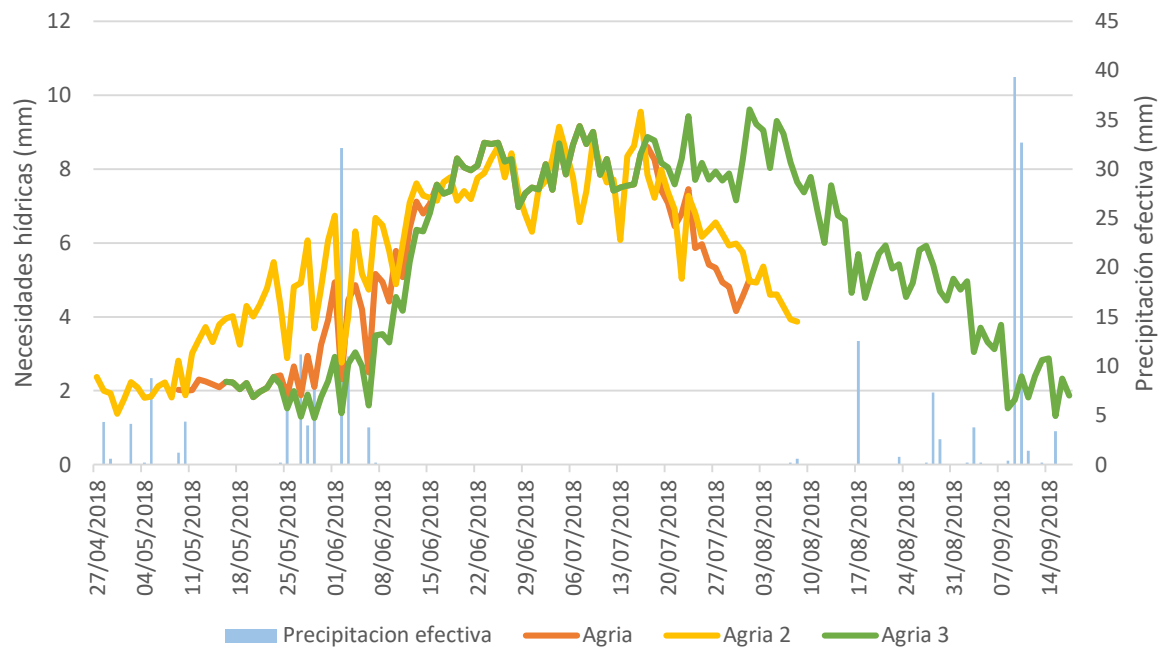
**S**ervicio de **A**sesoramiento de **R**iegos

## Patata diferentes cultivares

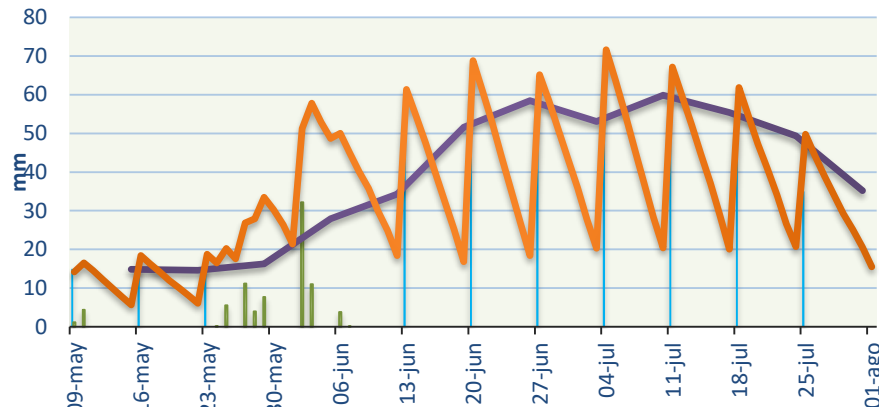


Servicio de Asesoramiento de Riegos

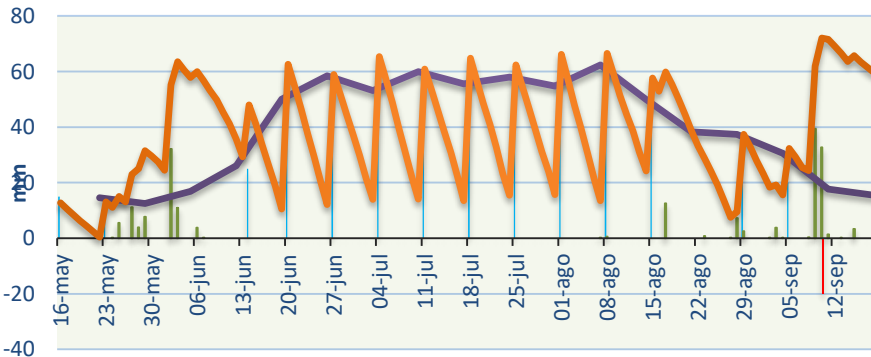
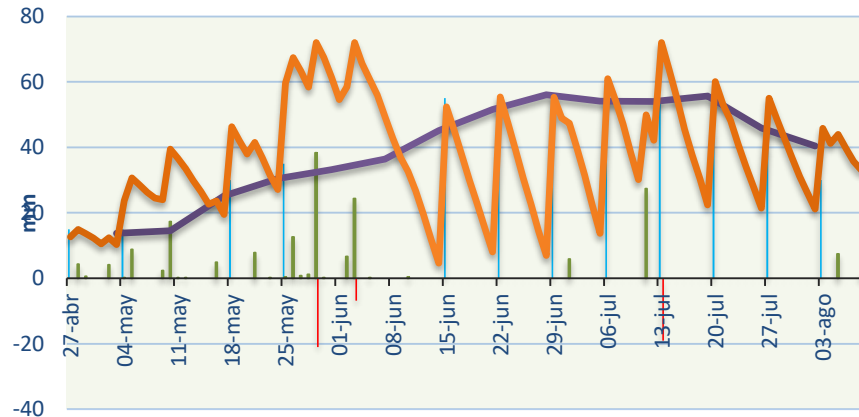
## Necesidades hídricas Patata cv. Agria



Servicio de Asesoramiento de Riegos



Patata cv. Agria



Nh (mm)	Pe (mm)	NRg (mm)	Per. (mm)	Ciclo
475	81	410	0	9-May/1-Agt
587	178	485	47	27-Abr/09-Agt
711	181	610	20	16-May/18-Spt



Gracias



[meli.itap@dipualba.es](mailto:meli.itap@dipualba.es)

Tlf. 967.19.00.90 ext 44118

I.T.A.P. Servicio de Asesoramiento de Riegos